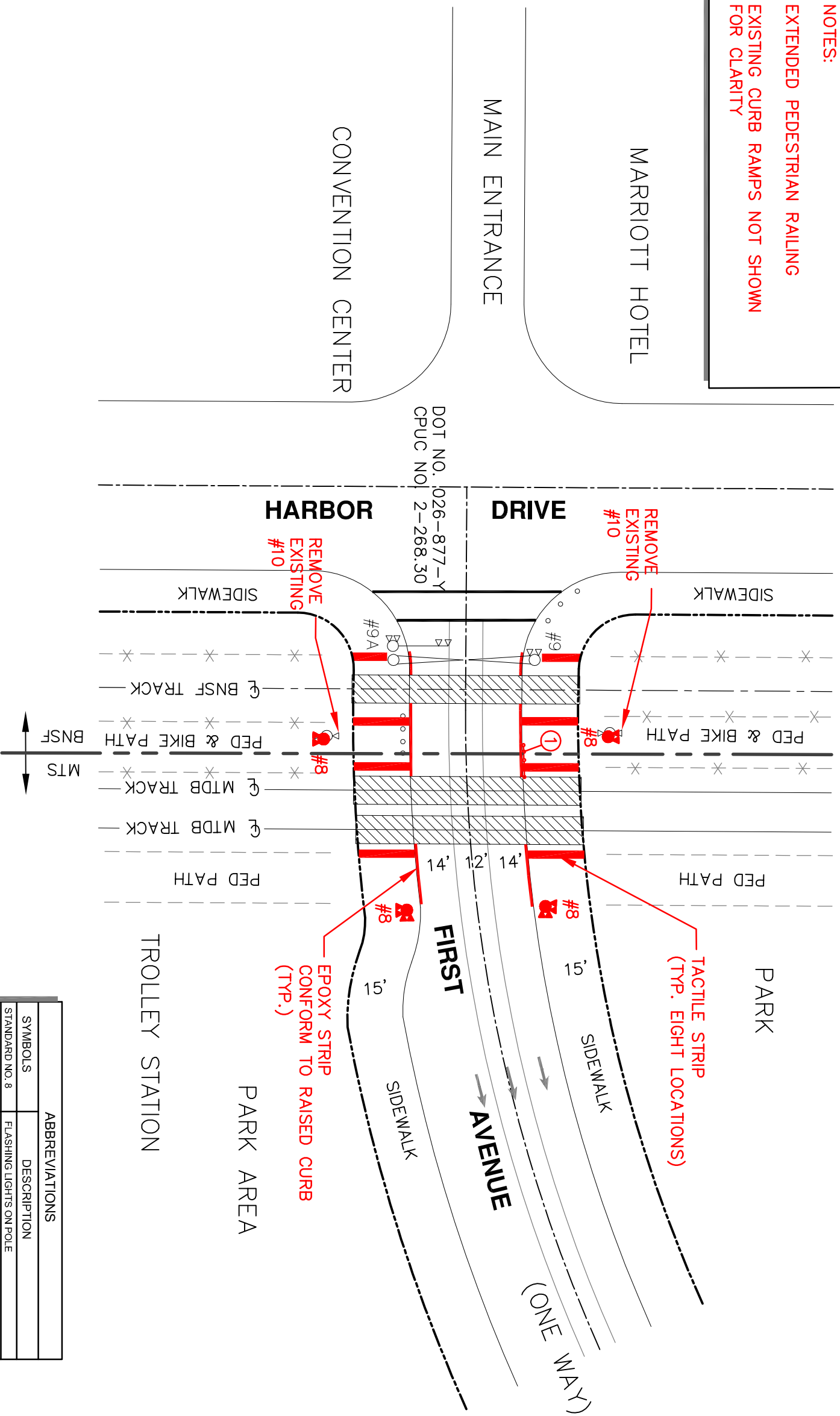


- NOTES:**
- ① EXTENDED PEDESTRIAN RAILING
 - ② EXISTING CURB RAMPS NOT SHOWN FOR CLARITY



SYMBOLS	ABBREVIATIONS	DESCRIPTION
STANDARD NO. 8	FLAS	FLASHING LIGHTS ON POLE
STANDARD NO. 8A	CANT	CANTILEVER WITH FLASHING LIGHTS
STANDARD NO. 9	GATE	GATE WITH FLASHING LIGHTS
STANDARD NO. 9A	GATE	GATE WITH FLASHING LIGHTS AND CANTILEVER
STANDARD NO. 10	FLAS	FLASHING LIGHT ON POLE
SIGN W47	RAIL	RAIL ROAD CROSSING SIGN R X R



NOT FOR CONSTRUCTION
 ALL DIMENSIONS ARE IN FEET (ft) UNLESS OTHERWISE NOTED

NO.	DATE	DESCRIPTION	DESIGNED BY	CHECKED BY	IN CHARGE
6	11/22/05	CHANGES PER FIELD REVIEW 11/11/05 & TAAC MEETING 11/14/05	JB	MB	JB
5	11/3/05	MISCELLANEOUS REVISIONS	JB	MB	JB
4	7/22/05	INCORPORATE QZTT REVIEW COMMENTS	JB	MB	JB
3	6/23/05	INCORPORATE QZTT REVIEW COMMENTS	JB	MB	JB
2	5/26/05	INCORPORATE QZTT REVIEW COMMENTS	JB	MB	JB
1	3/4/05	INCORPORATE QZTT REVIEW COMMENTS	JB	MB	JB

DOWNTOWN SAN DIEGO QUIET ZONE STUDY

Centre City Development Corporation

Korve Engineering
 8559 Federal Boulevard, Suite 200
 San Diego, CA 92110
 (619) 582-4982 Fax (619) 585-7488

BDS Engineering, Inc.
 6539 Federal Boulevard, Suite 200
 San Diego, CA 92110
 (619) 582-4982 Fax (619) 585-7488

FIRST AVENUE CONCEPTUAL PLAN

CONTRACT NO. 40413X1

DRAWING NO. GC-011

SCALE

SHEET NO. 11 OF 14