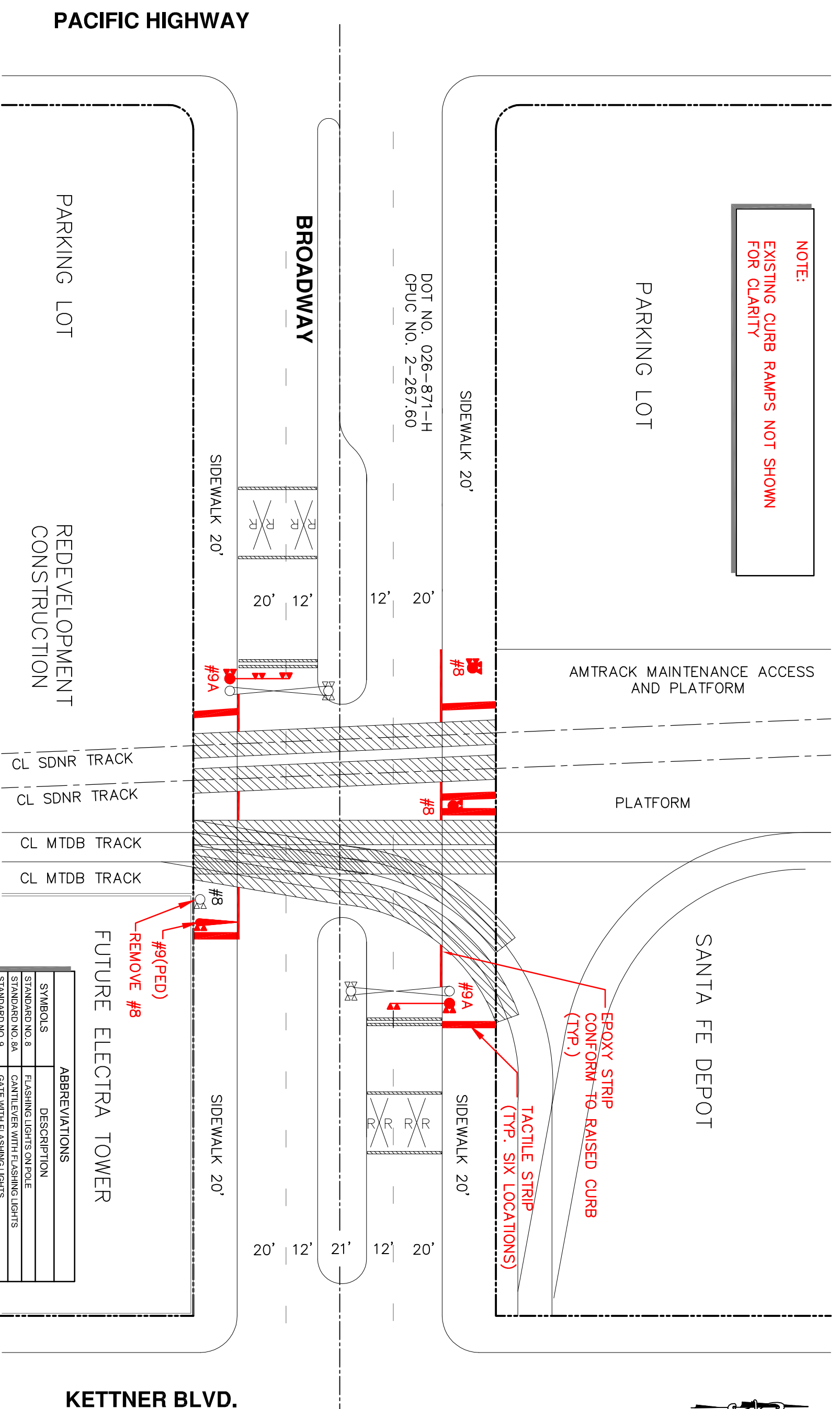


**NOTE:**  
EXISTING CURB RAMPS NOT SHOWN  
FOR CLARITY



DOT NO. 026-871-H  
CPUC NO. 2-267.60

AMTRACK MAINTENANCE ACCESS  
AND PLATFORM

PLATFORM

SANTA FE DEPOT

PACIFIC HIGHWAY

BROADWAY

PARKING LOT

REDEVELOPMENT  
CONSTRUCTION

FUTURE ELECTRA TOWER

KETTNER BLVD.

SYMBOLS	ABBREVIATIONS	DESCRIPTION
STANDARD NO. 8	FLASHING LIGHTS ON POLE	
STANDARD NO. 8A	CANTILEVER WITH FLASHING LIGHTS	
STANDARD NO. 9	GATE WITH FLASHING LIGHTS	
STANDARD NO. 9A	GATE WITH FLASHING LIGHTS AND CANTILEVER	
STANDARD NO. 10	FLASHING LIGHT ON POLE	
SIGN W47	RAILROAD CROSSING SIGN R X R	



**NOT FOR CONSTRUCTION**  
ALL DIMENSIONS ARE IN FEET (ft) UNLESS OTHERWISE NOTED

REV	DATE	DESCRIPTION	DESIGNED BY	DATE
6	11/22/05	CHANGES PER FIELD REVIEW 11/11/05 & TAAC MEETING 11/14/05	JB	
5	11/3/05	MISCELLANEOUS REVISIONS	MB	
4	7/22/05	INCORPORATE QZTT REVIEW COMMENTS	JB	
3	6/23/05	INCORPORATE QZTT REVIEW COMMENTS	JB	
2	5/26/05	INCORPORATE QZTT REVIEW COMMENTS	JB	
1	3/4/05	INCORPORATE QZTT REVIEW COMMENTS	JB	

DESIGNED BY	DATE	CHECKED BY	DATE
JB		MB	
MB		JB	
JB		JB	

**DOWNTOWN SAN DIEGO QUIET ZONE STUDY**

**Centre City Development Corporation**

**Korve Engineering**  
300 B Street, Suite 200  
San Diego, CA 92101  
(619) 582-4982 Fax (619) 585-7488

**BDS Engineering, Inc.**  
6859 Federal Boulevard  
San Diego, CA 92121  
(619) 582-4982 Fax (619) 585-7488

**BROADWAY CONCEPTUAL PLAN**

CONTRACT NO. 40413X1  
DRAWING NO. GC-007  
SHEET NO. 7 OF 14